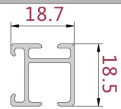




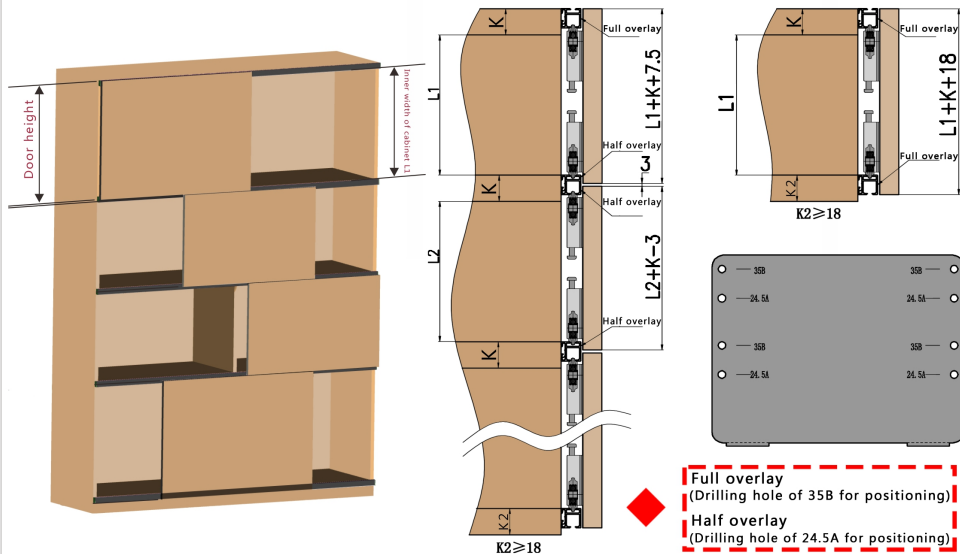
Soft Close Sliding Door System Installation Guide

Accessories	Drawing	1 door	Accessories	Drawing	1 door
Runner		4	Allen key		1
Damper		2	End cap		4
ST4x16 Flat head tapping screws		48	ST4x14 Pan head tapping screw		16
Aluminum rail		2	Plastic fitting		16
Slip preventing fitting		4	Drilling mold		1

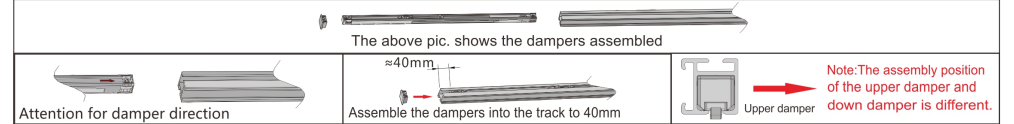
Aluminum Rail Dimension



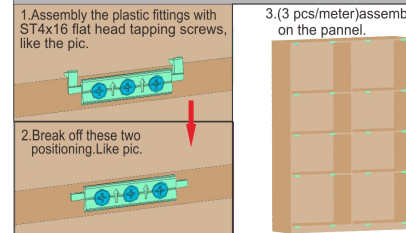
Dimension of the door and cabinet ($16 \leq K \leq 20$)



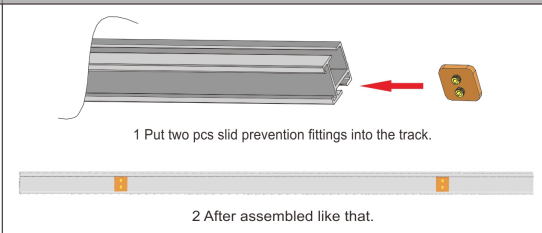
Assembly the dampers and the end caps



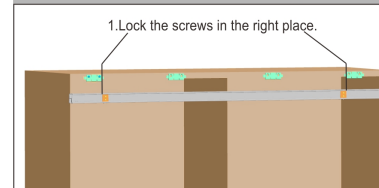
2. Assemble the plastic fittings



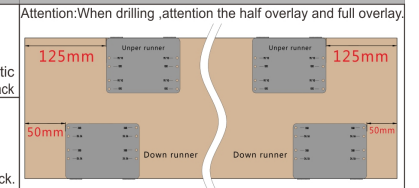
3 Assemble the slid prevention fitting



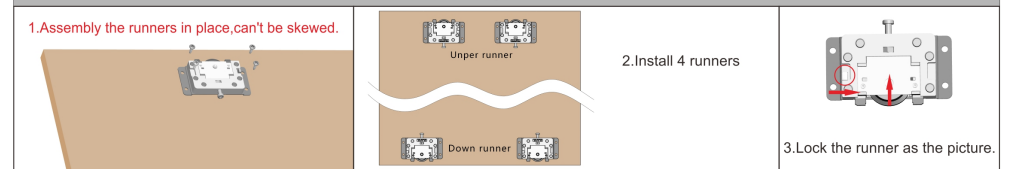
4. Assembly the tracks



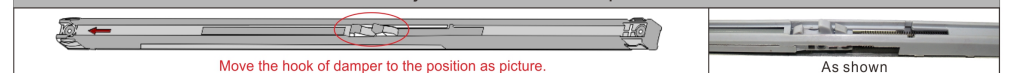
5. Pre-drilling for the runners



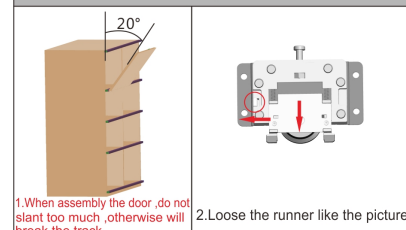
6. Assembly the runners



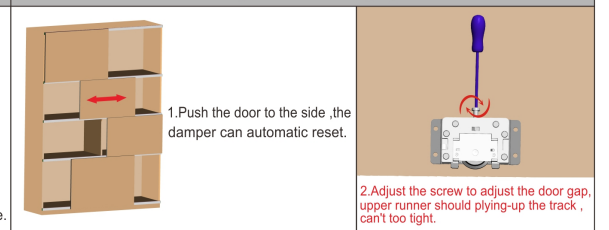
7. Adjust the hook of damper.



8. Assembly the door.



9. Adjust the door gap.



10. Lock the damper

